

TULA

RESIDENCE

701-1601

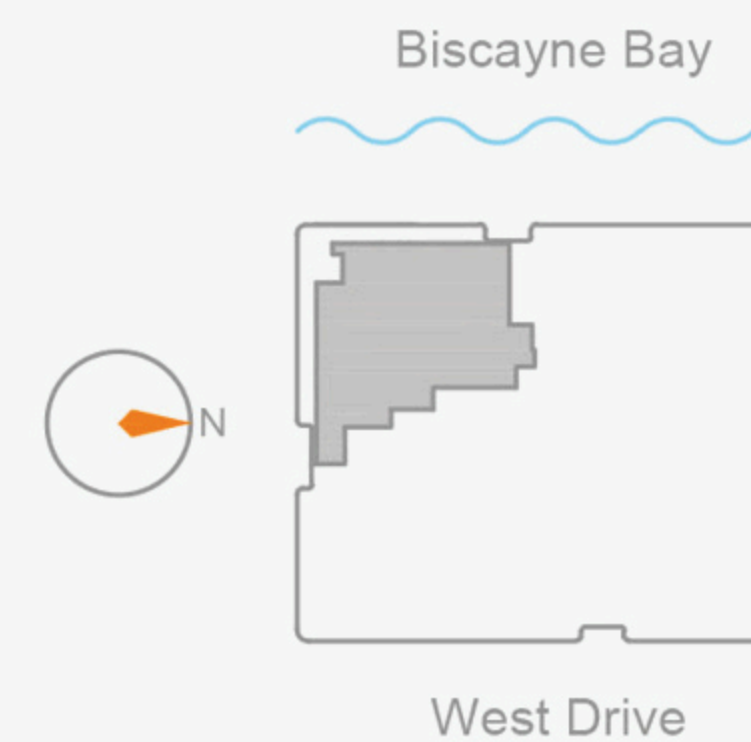
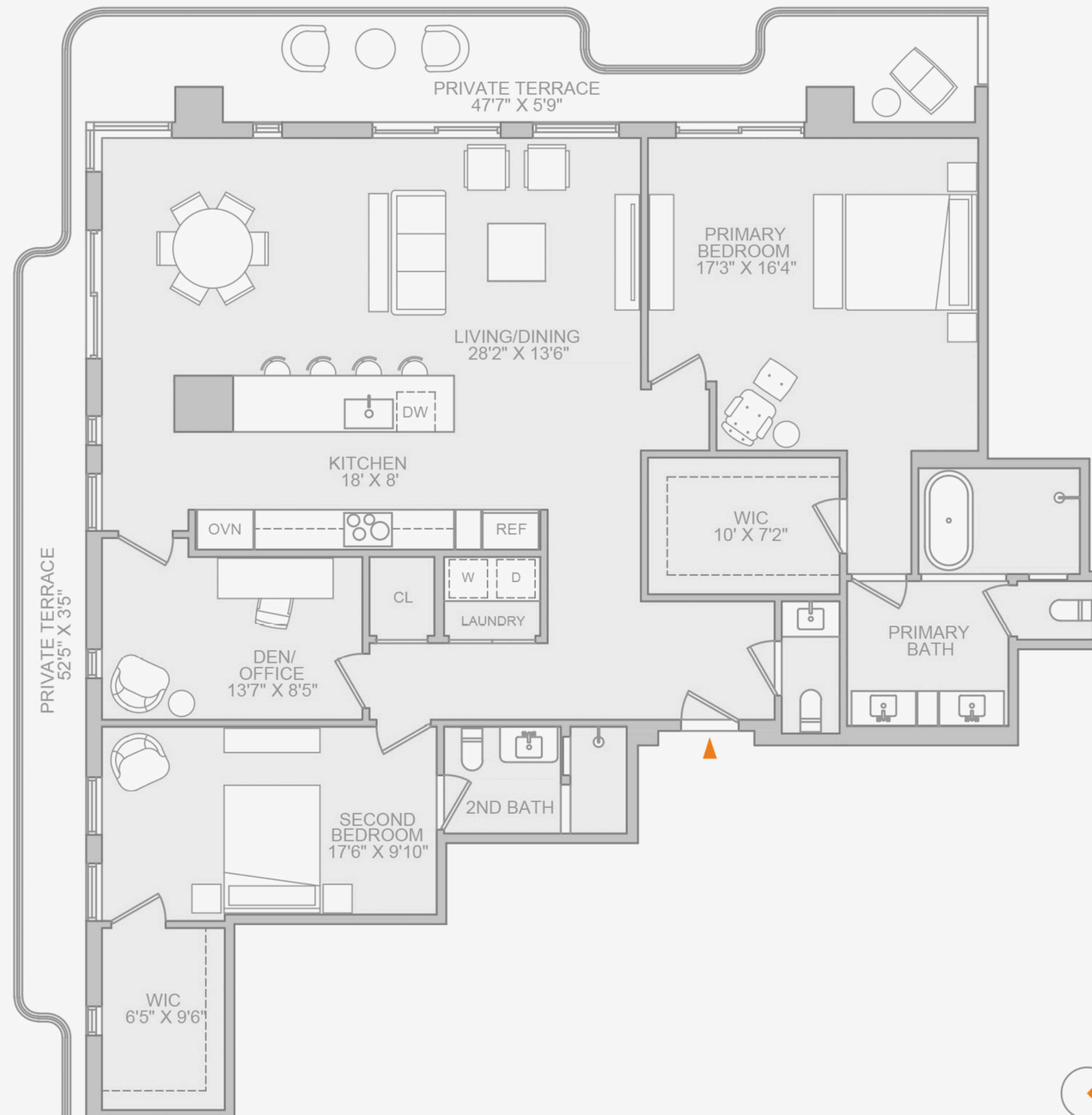
2 Bedrooms + Den
2 Bathrooms
Powder Room

Interior: 1,801 SF | 167 SQM

Exterior: 460 SF | 43 SQM

Total: 2,350 SF | 218 SQM

- South and West exposures
- Wraparound private terrace
- Ceiling heights up to 10 feet
- Custom-designed chef's kitchen with a fully integrated Miele appliance suite
- Luxurious primary bedroom featuring a five-fixture en-suite bathroom
- In-unit Miele washer and dryer



TULA

RESIDENCE

702-1602

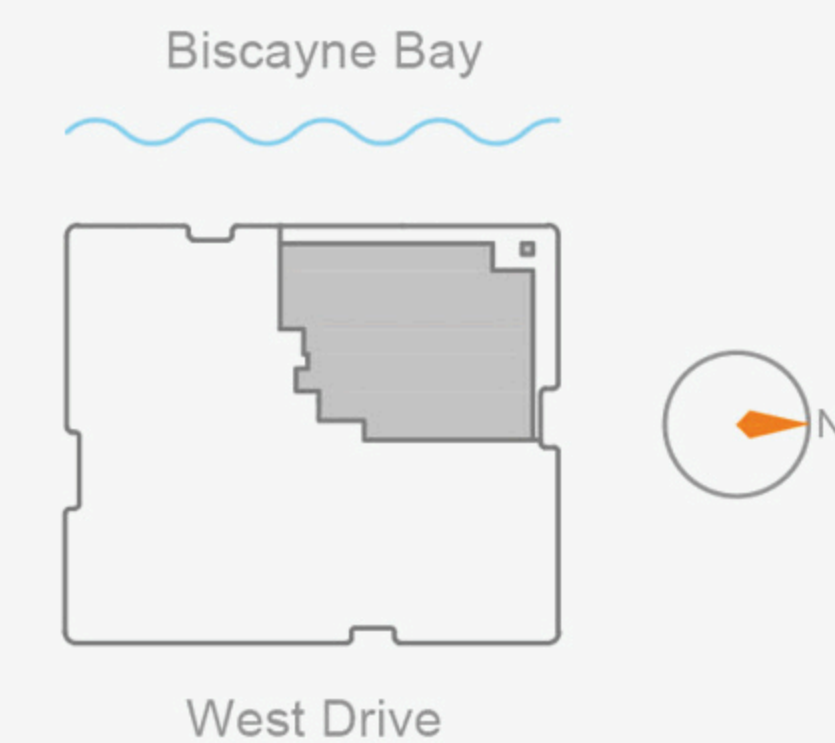
3 Bedrooms
3 Bathrooms
Powder Room

Interior: 2,345 SF | 218 SQM

Exterior: 575 SF | 53 SQM

Total: 2,920 SF | 271 SQM

- West and North exposures
- Wraparound private terrace
- Ceiling heights up to 10 feet
- Custom-designed chef's kitchen with a fully integrated Miele appliance suite
- Luxurious primary bedroom featuring a five-fixture en-suite bathroom
- In-unit Miele washer and dryer



TULA

RESIDENCE

703-1603

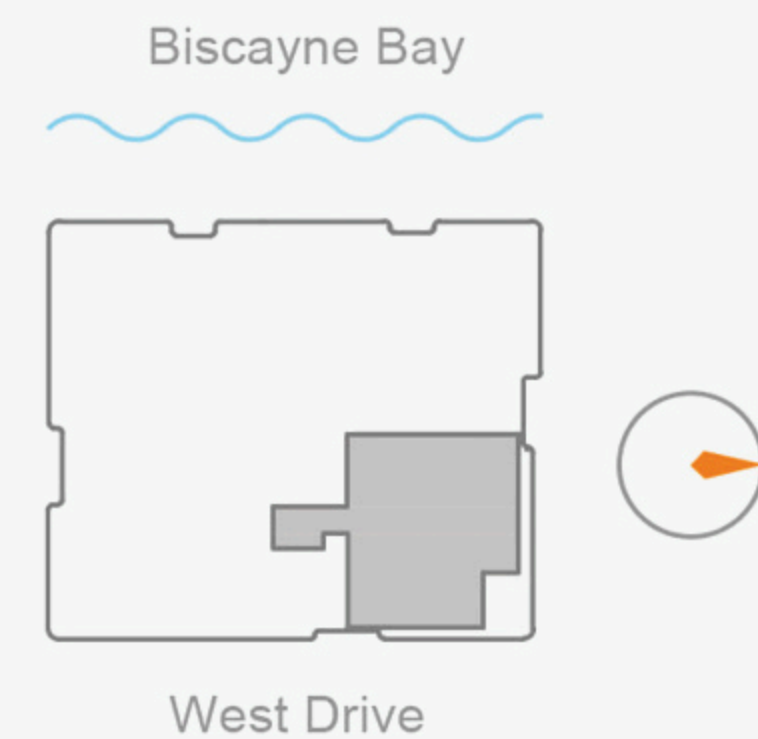
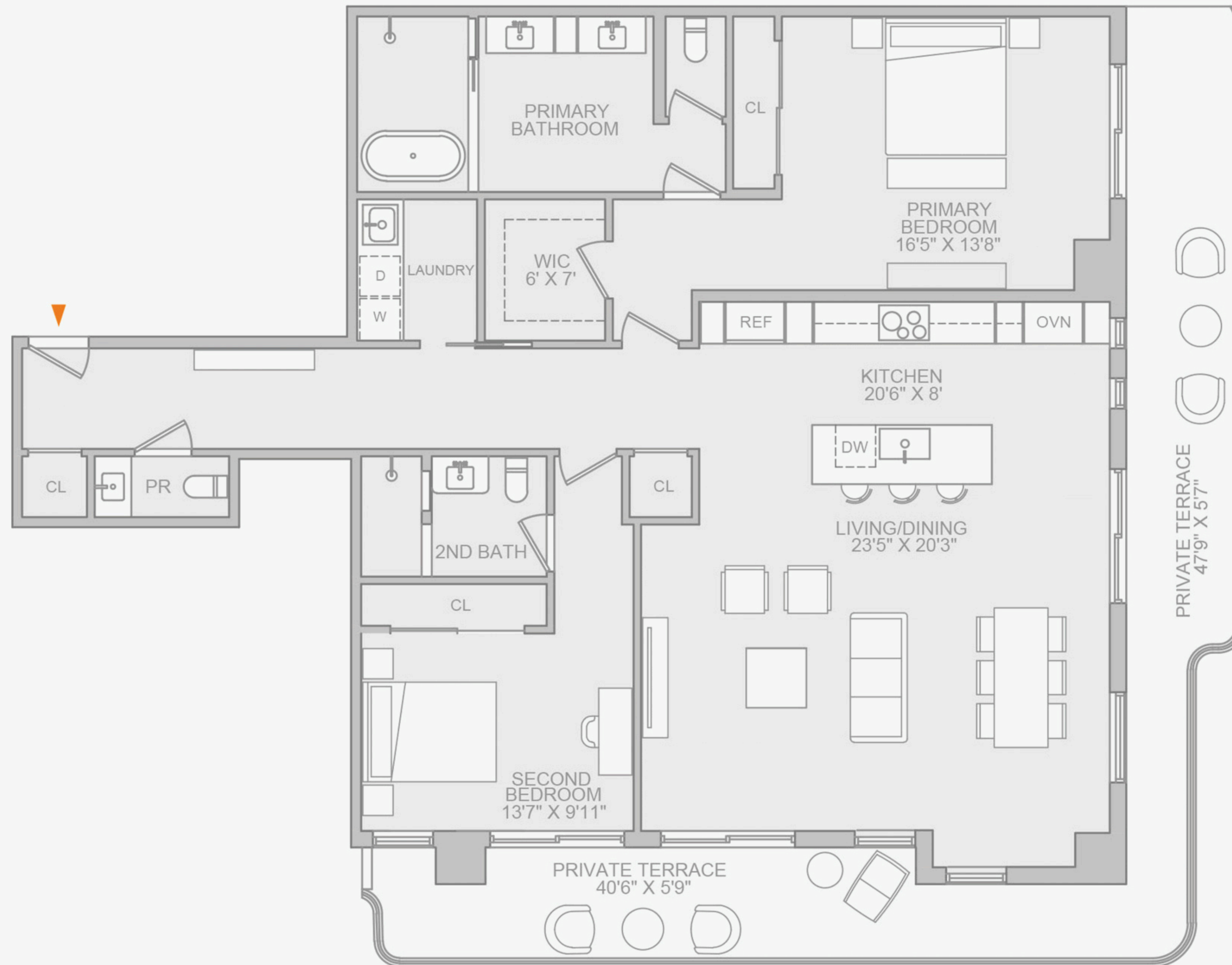
2 Bedrooms
2 Bathrooms
Powder Room

Interior: 1,770 SF | 164 SQM

Exterior: 485 SF | 45 SQM

Total: 2,255 SF | 209 SQM

- North and East exposures
- Wraparound private terrace
- Ceiling heights up to 10 feet
- Custom-designed chef's kitchen with a fully integrated Miele appliance suite
- Luxurious primary bedroom featuring a five-fixture en-suite bathroom
- In-unit Miele washer and dryer



TULA

RESIDENCE

704-1604

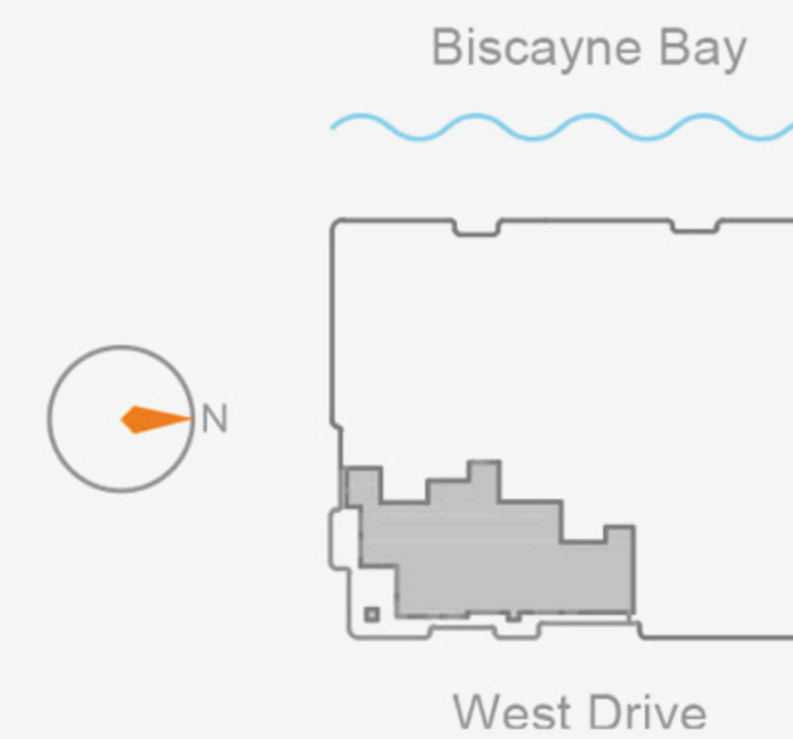
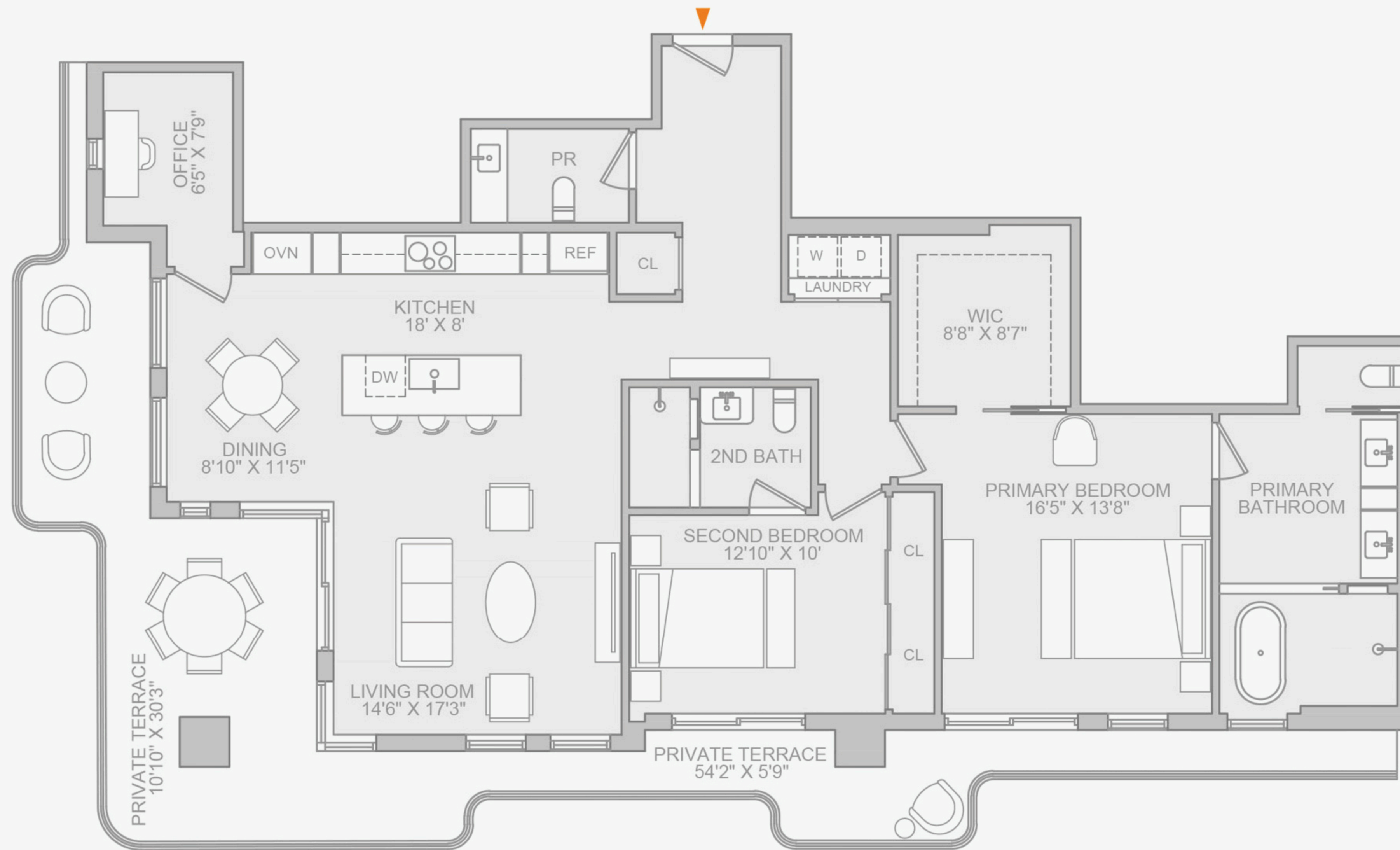
2 Bedrooms
2 Bathrooms
Powder Room

Interior: 1,590 SF | 148 SQM

Exterior: 530 SF | 49 SQM

Total: 2,120 SF | 197 SQM

- South and East exposures
- Wraparound private terrace
- Ceiling heights up to 10 feet
- Custom-designed chef's kitchen with a fully integrated Miele appliance suite
- Luxurious primary bedroom featuring a five-fixture en-suite bathroom
- In-unit Miele washer and dryer



TULA

RESIDENCE

1701-1901

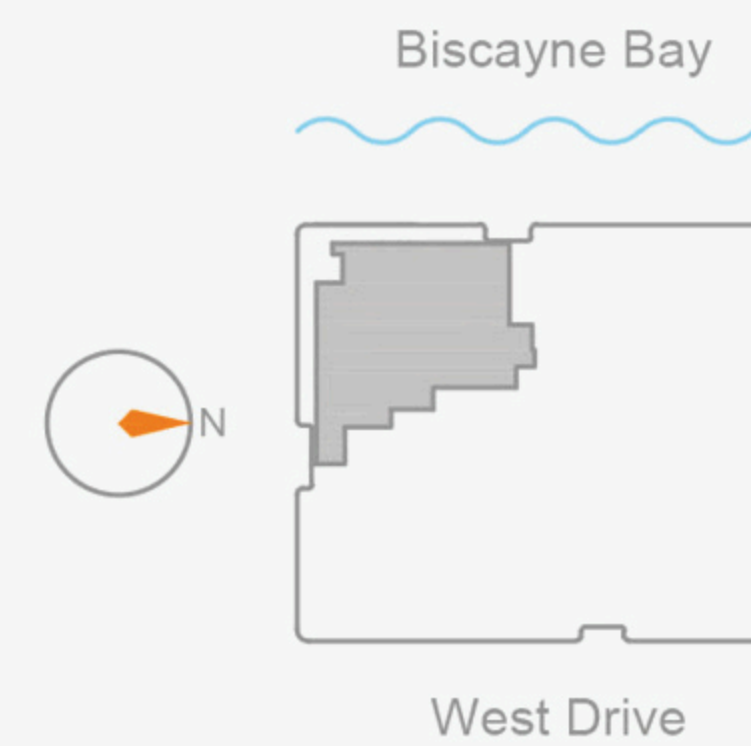
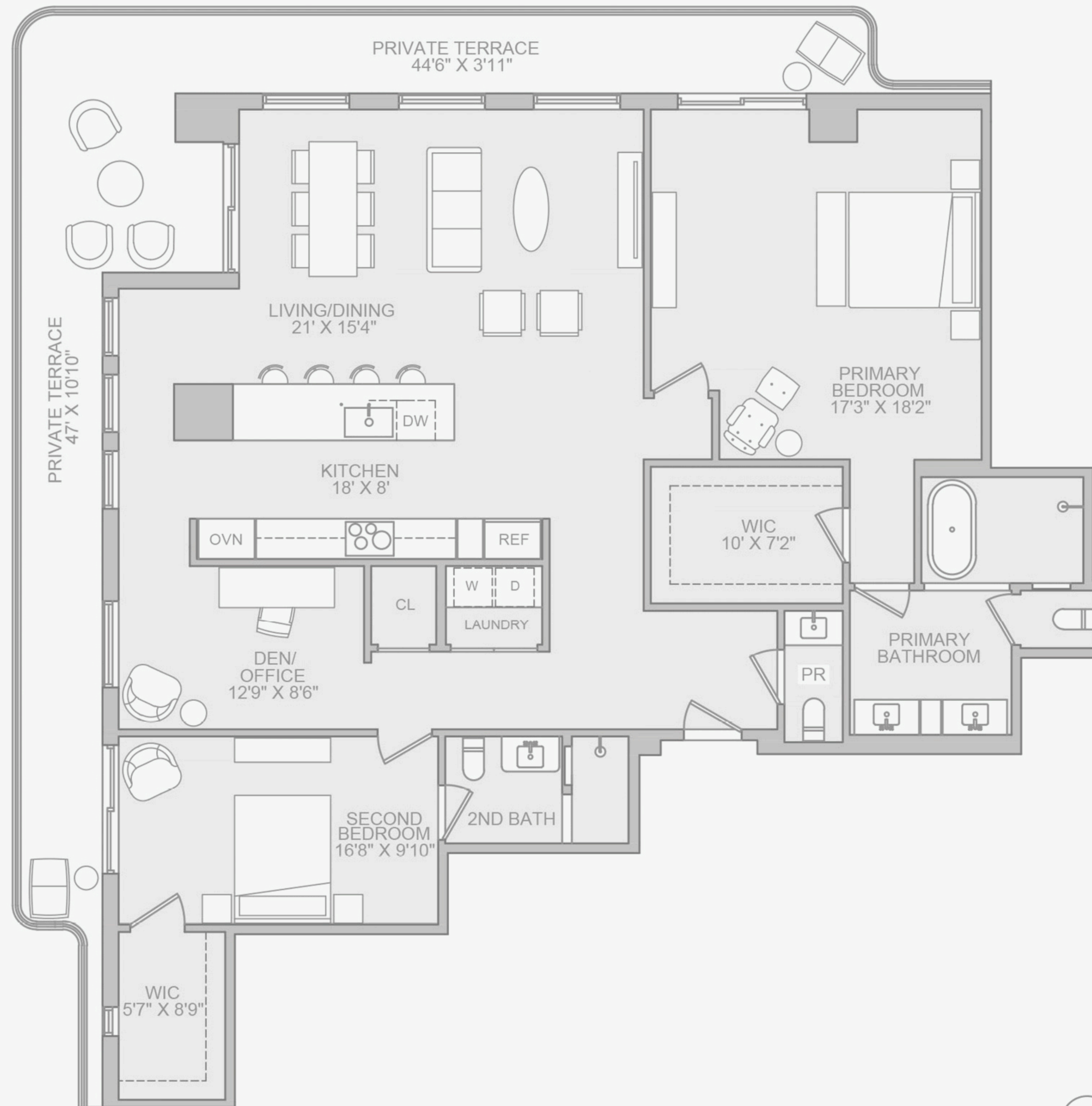
2 Bedrooms + Den
2 Bathrooms
Powder Room

Interior: 1,850 SF | 172 SQM

Exterior: 505 SF | 47 SQM

Total: 2,355 SF | 219 SQM

- South and West exposures
- Wraparound private terrace
- Ceiling heights up to 10 feet
- Custom-designed chef's kitchen with a fully integrated Miele appliance suite
- Luxurious primary bedroom featuring a five-fixture en-suite bathroom
- In-unit Miele washer and dryer



ORAL REPRESENTATIONS CANNOT BE RELIED UPON AS CORRECTLY STATING THE REPRESENTATIONS OF THE DEVELOPER. FOR CORRECT REPRESENTATIONS, MAKE REFERENCE TO THIS WEBSITE AND TO THE DOCUMENTS REQUIRED BY SECTION 718.503, FLORIDA STATUTES, TO BE FURNISHED BY A DEVELOPER TO A BUYER OR LESSEE. THE COMPLETE OFFERING TERMS ARE IN A CPS-12 APPLICATION AVAILABLE FROM THE OFFEROR. FILE NO. CP24-0048. This is not intended to be an offer to sell, or solicitation to buy, condominium units to residents of any jurisdiction where prohibited by law, and your eligibility for purchase will depend upon your state of residency. The offering is made only by the prospectus for the condominium and no statement should be relied upon if not made in the prospectus. All depictions of matters of detail shown herein, including, without limitation, items of finish, furniture and decoration, are conceptual only and are not necessarily included in the Unit. For a correct representation of the items included in the Unit, see the Purchase Agreement. Stated interior square footage is measured to the exterior face of exterior walls and to the centerline of interior demising walls or to the exterior face of walls adjoining corridors or other common elements or shared facilities without excluding areas that may be occupied by columns or other structural components. This method of measurement varies from, and is larger than, the dimensions that would be determined by using the description and the definition of the Unit set forth in the Declaration (which generally only includes the interior airspace between the perimeter walls and excludes structural components). For reference, the area of the unit, determined in accordance with the unit boundaries set forth in the Declaration is set forth in Exhibit "3" to the Declaration. All dimensions are approximate and may vary with actual construction.

TULA

RESIDENCE

1704

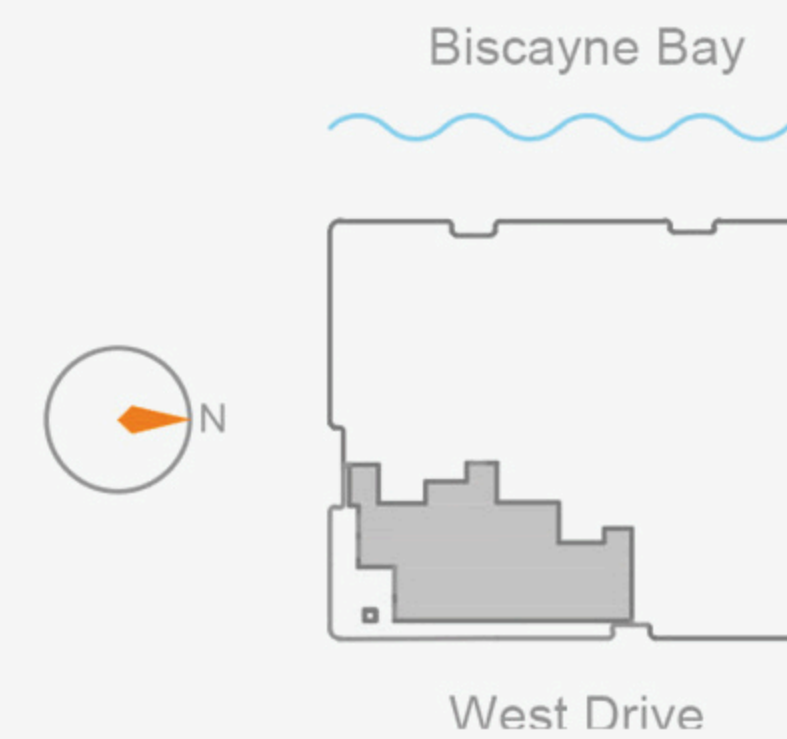
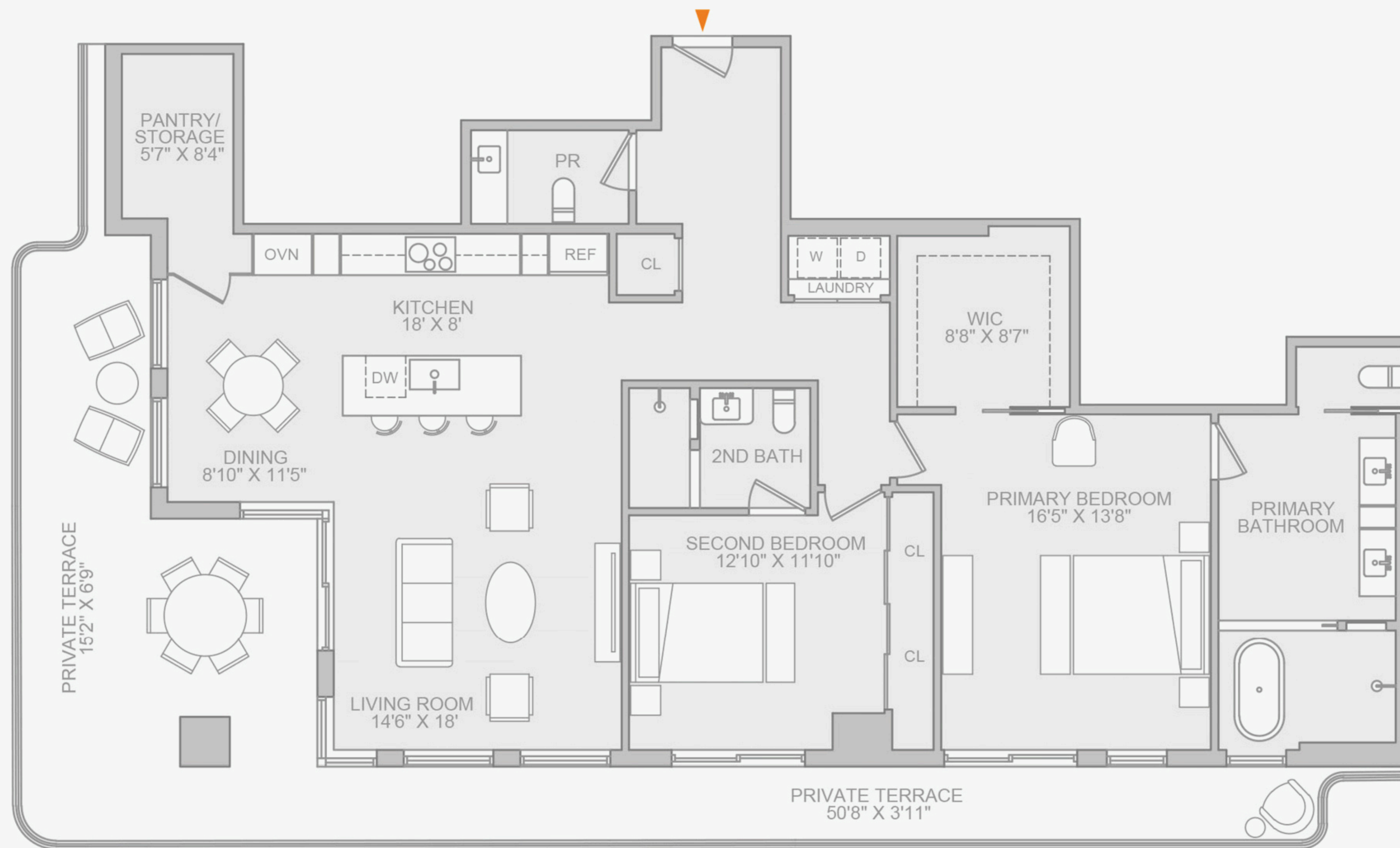
2 Bedrooms
2 Bathrooms
Powder Room

Interior: 1,670 SF | 155 SQM

Exterior: 620 SF | 58 SQM

Total: 2,290 SF | 213 SQM

- South and East exposures
- Wraparound private terrace
- Ceiling heights up to 10 feet
- Custom-designed chef's kitchen with a fully integrated Miele appliance suite
- Luxurious primary bedroom featuring a five-fixture en-suite bathroom
- In-unit Miele washer and dryer



TULA

RESIDENCE

PH2001

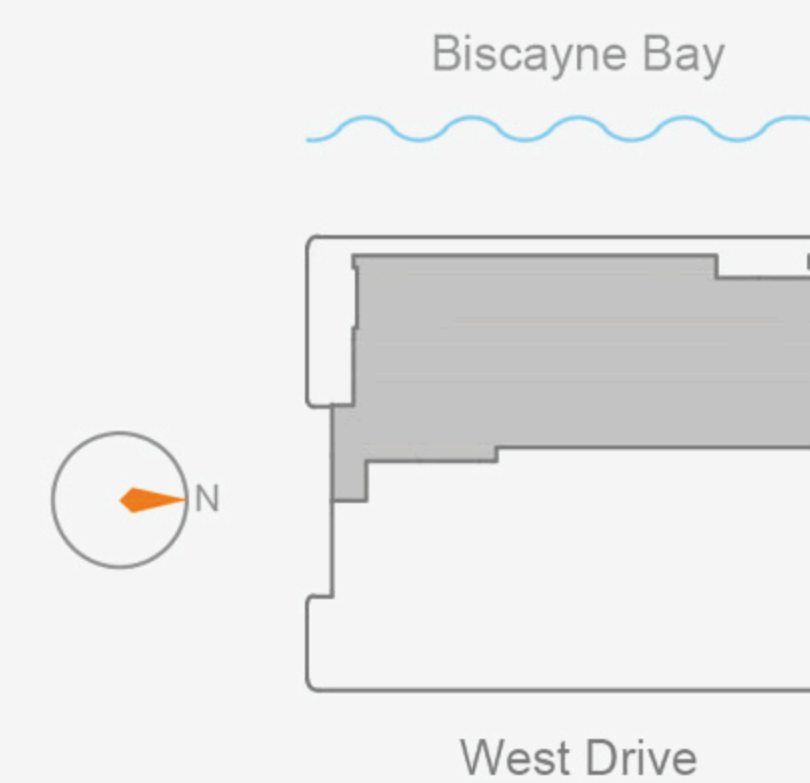
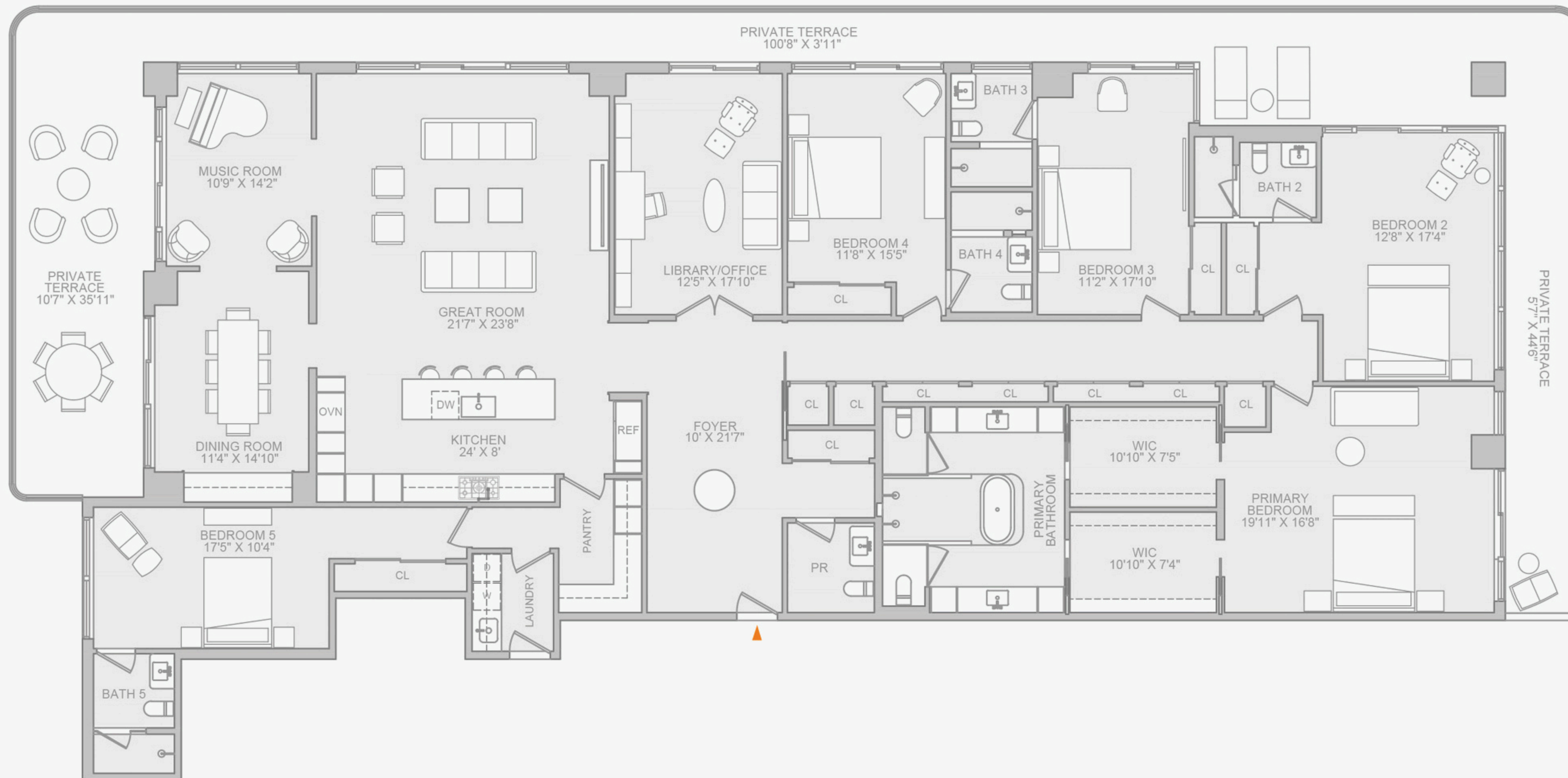
5 Bedrooms + Den
5 Bathrooms
Powder Room

Interior: 4,140 SF | 385 SQM

Exterior: 1,230 SF | 114 SQM

Total: 5,370 SF | 499 SQM

- South, West, North exposures
- Wraparound private terrace
- Ceiling heights up to 10 feet
- Custom-designed chef's kitchen with a fully integrated Miele appliance suite
- Luxurious primary bedroom featuring a five-fixture en-suite bathroom
- In-unit Miele washer and dryer



ORAL REPRESENTATIONS CANNOT BE RELIED UPON AS CORRECTLY STATING THE REPRESENTATIONS OF THE DEVELOPER. FOR CORRECT REPRESENTATIONS, MAKE REFERENCE TO THIS WEBSITE AND TO THE DOCUMENTS REQUIRED BY SECTION 718.503, FLORIDA STATUTES, TO BE FURNISHED BY A DEVELOPER TO A BUYER OR LESSEE. THE COMPLETE OFFERING TERMS ARE IN A CPS-12 APPLICATION AVAILABLE FROM THE OFFEROR. FILE NO. CP24-0048. This is not intended to be an offer to sell, or solicitation to buy, condominium units to residents of any jurisdiction where prohibited by law, and your eligibility for purchase will depend upon your state of residency. The offering is made only by the prospectus for the condominium and no statement should be relied upon if not made in the prospectus. All depictions of matters of detail shown hereon, including, without limitation, items of finish, furniture and decoration, are conceptual only and are not necessarily included in the Unit. For a correct representation of the items included in the Unit, see the Purchase Agreement. Stated interior square footage is measured to the exterior face of exterior walls and to the centerline of interior demising walls or to the exterior face of walls adjoining corridors or other common elements or shared facilities without excluding areas that may be occupied by columns or other structural components. This method of measurement varies from, and is larger than, the dimensions that would be determined by using the description and the definition of the Unit set forth in the Declaration (which generally only includes the interior airspace between the perimeter walls and excludes structural components). For reference, the area of the unit, determined in accordance with the unit boundaries set forth in the Declaration is set forth in Exhibit "3" to the Declaration. All dimensions are approximate and may vary with actual construction.

TULA

RESIDENCE

PH2202

5 Bedrooms + Den
5 Bathrooms
Powder Room

Interior: 3,700 SF | 344 SQM

Exterior: 1,180 SF | 110 SQM

Total: 4,880 SF | 454 SQM

- South, East, North exposures
- Wraparound private terrace
- Ceiling heights up to 10 feet
- Custom-designed chef's kitchen with a fully integrated Miele appliance suite
- Luxurious primary bedroom featuring a five-fixture en-suite bathroom
- In-unit Miele washer and dryer

